

F-Secure Client Security

Quick Installation Guide

Contents

Chapter 1: Introduction.....	5
Chapter 2: Installing Client Security.....	7
System requirements.....	8
Stand-alone installation.....	8
Before you install	8
Installation steps.....	9
Remote installation.....	9
Uninstall other antivirus programs.....	10
Install Policy Manager	10
Install Client Security remotely	10
Local installation and Policy Manager.....	10
Uninstall other antivirus programs.....	11
Installation steps.....	11
Configure the product using Policy Manager	12
Chapter 3: Installing Policy Manager.....	13
System requirements.....	14
Policy Manager Server.....	14
Policy Manager Console.....	15
Product registration.....	15
Installing the product.....	16
Download and run the installation package.....	16
Select components to install.....	17
Complete installation of the product.....	20
Remote deployment of other F-Secure products.....	22

Introduction

This document provides brief instructions for getting started with F-Secure Client Security and Policy Manager.

This guide describes how to get started with F-Secure Client Security and includes installation instructions for:

- Client Security
- Policy Manager

For detailed instructions on the installation and use of the products, refer to the applicable product manuals included on the installation CD. The most recent versions of the manuals are also available in PDF format on our web site at www.f-secure.com/webclub.

Installing Client Security

Topics:

- [System requirements](#)
- [Stand-alone installation](#)
- [Remote installation](#)
- [Local installation and Policy Manager](#)

This section contains instructions for installing Client Security.

The following information is provided here:

- System requirements
- Remote and local installation options for corporate computers

System requirements


Read the following before starting to use the product.

The recommended requirements for installing and using the product on your computer are:
System requirements

Processor:	<ul style="list-style-type: none">• On Windows Vista and Windows 7: Intel Pentium 4 2 GHz or higher• On Windows XP: Intel Pentium III 1 GHz or higher
Operating system:	<ul style="list-style-type: none">• Windows 7 32-bit and 64-bit• Windows Vista 32-bit and 64-bit• Windows XP SP2 or newer
Memory:	<ul style="list-style-type: none">• On Windows Vista and Windows 7: 1 GB of RAM or more• On Windows XP: 512 MB of RAM or more
Disk space:	800 MB free hard disk space
Display:	<ul style="list-style-type: none">• On Windows Vista and Windows 7: 16 bit or more (65000 colors)• On Windows XP: 16 bit, 65000 colors or more
Internet connection:	Required to validate your subscription and receive updates

Stand-alone installation

Client Security can be installed individually on each workstation, which is the recommended method for small networks with 2 - 5 workstations.

 **Note:** When installing Client Security for a stand-alone installation, select **Locally managed stand-alone installation** when the management selection step is displayed during setup.

Before you install

Read the following before installing the product.

- If you are using a previous version of F-Secure Internet Security or F-Secure Anti-Virus, you can install this product directly. Follow the instructions in “Installation Steps”.
- If you have an evaluation version of F-Secure Internet Security 2010 or F-Secure Anti-Virus 2010 on your computer, and you have purchased the licensed version, you can start using it after you enter the subscription key.

To enter the subscription key:

1. On the main page, click **Tasks**.
2. Click **My subscription**.
3. Select **Enter new subscription key...**
4. In the dialog box that opens, enter your new subscription key and click **Register**.

If you received your subscription key by e-mail, you can copy the key from the e-mail message and paste it into the field.

Installation steps

You need the product CD, a valid subscription key and an Internet connection. If multiple users share and use the computer, log on with administrator privileges to install this product.

To install the software:

1. Insert the Installation CD.


The installation should start automatically. If it does not, go to Windows Explorer, double-click on the CD-ROM icon and double-click the `setup.exe` file to start the installation.

The first installation dialog box appears.


2. Select the installation language and click **Next** to continue.

3. Read the license agreement. To accept the agreement and to continue, click **Accept**.

4. Enter your subscription key and click **Next** to continue.

 **Note:** If you want to evaluate the product, leave the **My subscription key is** field empty and click **Next**. In the **Evaluation Options** dialog box, select the service to evaluate.

- If you purchased the product on a CD from a shop, you can find the subscription key on the cover of the Quick Installation Guide.
- If you downloaded the product from the F-Secure eStore, the subscription key is included in the confirmation e-mail of the purchase order.

 **Note:** Use only the subscription key delivered with the product. You can use the subscription key for the number of installations your license is for (see the 'F-Secure License' note in this guide). If you have problems in registering, please contact F-Secure Technical Support.

5. Select the installation type:


- Automatic installation: The product is installed automatically. Existing security products may be automatically replaced. The product is installed to the default directory.
- Step by step installation: You can make selections during the installation. You can for example, change the installation directory. However, we recommend using the default directory.

6. Click **Next**.

7. After the installation is complete, remove the Installation CD.

8. The computer restarts automatically. To restart immediately, select **Restart now**.


9. After the restart, the product tries to connect to the Internet to validate your subscription and download updates. Make sure that you are connected to the Internet. Downloading these major updates may take some time. When the updates have been downloaded, the protection is up to date. The latest updates ensure the best protection.

 **Tip:** To learn more about the product, you can access the online help by clicking the **Help** button in the product. You can find the online help also on the Installation CD.

Remote installation

Remote installation with Policy Manager is recommended for networks with more than 5 workstations.

If you are not familiar with Policy Manager, refer to the Policy Manager Administrator's Guide included on www.f-secure.com/webclub.

 **Note:** Policy Manager has two user interfaces; **Advanced mode** and **Anti-virus mode**. You should use **Anti-virus mode** with Client Security.

Uninstall other antivirus programs

Before you begin installing Client Security, you should remove any other antivirus programs currently installed on the workstations.

To uninstall other antivirus programs:

1. Select the currently installed programs in the **Start > Settings > Control Panel > Add/Remove Programs** dialog.
2. Remove any related components.
Some programs may have several related components, which may need to be uninstalled separately. If you encounter problems, refer to the user documentation for the currently installed antivirus program.
3. Restart your computer.

Install Policy Manager

The steps given here are general guidelines for installing Policy Manager and preparing the domain structure.

1. Install Policy Manager.
2. Create the policy domain structure.

Install Client Security remotely


The following steps are a general guideline for remote installation of Client Security.

1. Use the **Autodiscover Windows hosts** operation to install Client Security to the workstations.
Policy Manager Console will use a remote installation wizard to configure the Client Security installation.
2. Add new workstations to a suitable policy domain when the installation is complete.
3. Configure the Client Security settings for the workstations.
The domain-level settings are shared by all workstations in the policy domain.
4. Distribute the policies.
The managed workstations will receive the updated policy the next time they connect to the server.

Local installation and Policy Manager

Local installation is recommended if you need to install Client Security locally on a workstation that is otherwise centrally managed by Policy Manager.

You must have Policy Manager already installed before you can continue with the installation.

-  **Note:** When installing Client Security to be managed by Policy Manager, select **Central management with F-Secure Policy Manager** when the management selection step is displayed during setup. You will also be asked to provide the location of the Policy Manager public key (`admin.pub`) and the network address of the Policy Manager Server in use. These details are required to ensure secure communication with Policy Manager. You can download the public key from the Policy Manager Server welcome page.

Uninstall other antivirus programs

Before you begin installing Client Security, you should remove any other antivirus programs currently installed on the workstations.



To uninstall other antivirus programs:


1. Select the currently installed programs in the **Start > Settings > Control Panel > Add/Remove Programs** dialog.
2. Remove any related components.
Some programs may have several related components, which may need to be uninstalled separately. If you encounter problems, refer to the user documentation for the currently installed antivirus program.
3. Restart your computer.

Installation steps

You need the product CD, a valid subscription key and an Internet connection. If multiple users share and use the computer, log on with administrator privileges to install this product.

To install the software:

1. Insert the Installation CD.
The installation should start automatically. If it does not, go to Windows Explorer, double-click on the CD-ROM icon and double-click the `setup.exe` file to start the installation.
The first installation dialog box appears.
2. Select the installation language and click **Next** to continue.
3. Read the license agreement. To accept the agreement and to continue, click **Accept**.
4. Enter your subscription key and click **Next** to continue.
 -  **Note:** If you want to evaluate the product, leave the **My subscription key is** field empty and click **Next**. In the **Evaluation Options** dialog box, select the service to evaluate.
 - If you purchased the product on a CD from a shop, you can find the subscription key on the cover of the Quick Installation Guide.
 - If you downloaded the product from the F-Secure eStore, the subscription key is included in the confirmation e-mail of the purchase order.
 -  **Note:** Use only the subscription key delivered with the product. You can use the subscription key for the number of installations your license is for (see the 'F-Secure License' note in this guide). If you have problems in registering, please contact F-Secure Technical Support.
5. Select the installation type:
 - Automatic installation: The product is installed automatically. Existing security products may be automatically replaced. The product is installed to the default directory.
 - Step by step installation: You can make selections during the installation. You can for example, change the installation directory. However, we recommend using the default directory.
6. Click **Next**.
7. After the installation is complete, remove the Installation CD.
8. The computer restarts automatically. To restart immediately, select **Restart now**.
9. After the restart, the product tries to connect to the Internet to validate your subscription and download updates. Make sure that you are connected to the Internet. Downloading these major updates may take some time. When the updates have been downloaded, the protection is up to date. The latest updates ensure the best protection.

 **Tip:** To learn more about the product, you can access the online help by clicking the [Help](#) button in the product. You can find the online help also on the Installation CD.

Configure the product using Policy Manager

The steps given here are general guidelines for configuring Client Security with Policy Manager.

1. Add new workstations to a suitable policy domain when the installation is complete.
2. Configure the Client Security settings for the workstations.

The domain-level settings are shared by all workstations in the policy domain.

3. Distribute the policies.

The managed workstations will receive the updated policy the next time they connect to the server.

Installing Policy Manager

Topics:

- [System requirements](#)
- [Product registration](#)
- [Installing the product](#)
- [Remote deployment of other F-Secure products](#)

This section explains how to install Policy Manager.

This section is a quick reference for installing Policy Manager from the installation package. The following information is provided:

- System requirements.
- User interface modes.
- Steps for installing Policy Manager components on a single computer.
- Remote deployment of F-Secure products to corporate computers.

System requirements

This section provides the system requirements for both Policy Manager Server and Policy Manager Console.

Policy Manager Server

In order to install Policy Manager Server, your system must meet the minimum requirements given here.

Operating system:	<p>Microsoft Windows:</p> <ul style="list-style-type: none">• Microsoft Windows Server 2003 SP1 or higher (32-bit); Standard, Enterprise, Web Edition or Small Business Server editions• Windows Server 2003 SP1 or higher (64-bit); Standard or Enterprise editions• Windows Server 2008 SP1 (32-bit); Standard, Enterprise or Web Server editions• Windows Server 2008 SP1 (64-bit); Standard, Enterprise, Web Server, Small Business Server or Essential Business Server editions• Windows Server 2008 R2 with or without SP1; Standard, Enterprise or Web Server editions
Processor:	<p>P4 2 GHz processor or faster.</p> <p>Managing more than 5000 hosts or using Web Reporting requires P4 3 GHz level processor or faster.</p>
Memory:	<p>512 MB RAM, 1 GB RAM recommended.</p> <p>Managing more than 5000 hosts or using Web Reporting requires 1 GB RAM.</p>
Disk space:	<p>5 GB of free hard disk space; 8 GB or more is recommended. The disk space requirements depend on the size of the installation.</p> <p>In addition to this it is recommended to allocate about 1 MB per host for alerts and policies. The actual disk space consumption per host is hard to anticipate, since it depends on how the policies are used and how many installation packages are stored.</p>
Network:	<p>10 Mbit network.</p> <p>Managing more than 5000 hosts requires a 100 Mbit network.</p>

Policy Manager Console

In order to install Policy Manager Console, your system must meet the minimum requirements given here.

Operating system:	<p>Microsoft Windows:</p> <ul style="list-style-type: none"> • Windows XP Professional (SP2 or higher) • Windows Vista (32-bit or 64-bit) with or without SP1; Business, Enterprise or Ultimate editions • Windows 7 (32-bit or 64-bit) with or without SP1; Professional, Enterprise or Ultimate editions • Microsoft Windows Server 2003 SP1 or higher (32-bit); Standard, Enterprise, Web Edition or Small Business Server editions • Windows Server 2003 SP1 or higher (64-bit); Standard or Enterprise editions • Windows Server 2008 SP1 (32-bit); Standard, Enterprise or Web Server editions • Windows Server 2008 SP1 (64-bit); Standard, Enterprise, Web Server, Small Business Server or Essential Business Server editions • Windows Server 2008 R2 with or without SP1; Standard, Enterprise or Web Server editions
Processor:	<p>P4 2 GHz processor or faster.</p> <p>Managing more than 5000 hosts requires P4 3 GHz processor or faster.</p>
Memory:	<p>512 MB of RAM.</p> <p>Managing more than 5000 hosts requires 1 GB of memory.</p>
Disk space:	<p>200 MB of free hard disk space.</p>
Display:	<p>Minimum 16-bit display with resolution of 1024x768 (32-bit color display with 1280x1024 or higher resolution recommended).</p>
Network:	<p>10 Mbit network.</p> <p>Managing more than 5000 hosts requires a 100 Mbit network.</p>

Product registration

You have the option of providing F-Secure with information regarding the use of Policy Manager by registering your product.

The following questions and answers provide some more information about registering your installation of Policy Manager. You should also view the F-Secure license terms

(http://www.f-secure.com/en_EMEA/estore/license-terms/) and privacy policy (http://www.f-secure.com/en_EMEA/privacy.html).

Why does F-Secure collect data?

In order to improve our service, we collect statistical information regarding the use of F-Secure products. To help F-Secure provide better service and support, you can allow us to link this information to your contact information. To allow this, please enter the customer number from your license certificate during the installation of Policy Manager.

What information is sent?

We collect information that cannot be linked to the end user or the use of the computer. The collected information includes F-Secure product versions, operating system versions, the number of managed hosts and the number of disconnected hosts. The information is transferred in a secure and encrypted format.

What do I benefit from submitting information to F-Secure?

When you contact our support, we can provide a solution to your problem more quickly based on the information collected. In addition, with this information we can further develop our product and services to match the needs of our customers even better.

Where is the information stored and who can access it?

The data is stored in F-Secure's highly secured data center, and only F-Secure's assigned employees can access the data.

Installing the product

This section explains the steps required to install Policy Manager.

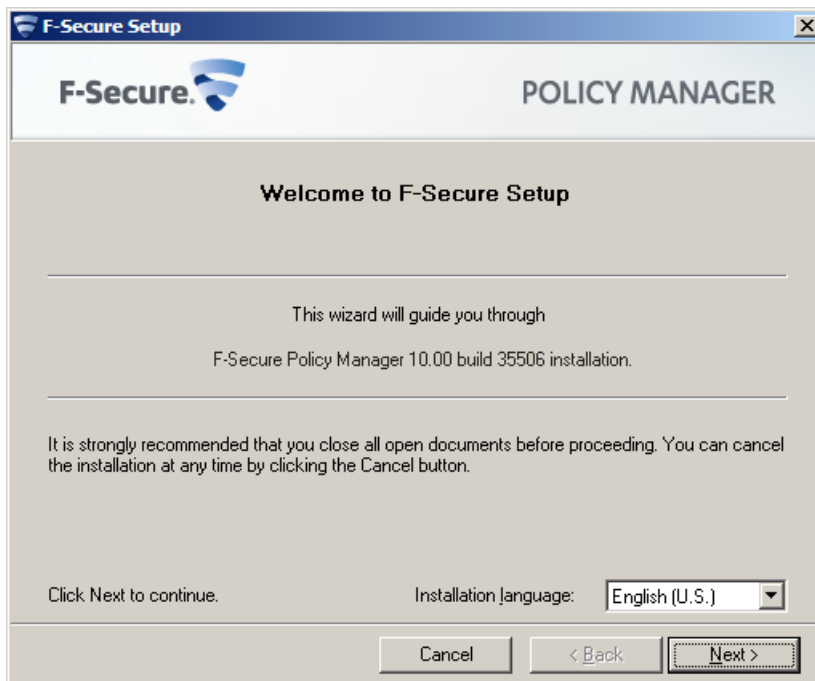
Here you will find instructions for installing the main product components; Policy Manager Server and Policy Manager Console.

Download and run the installation package

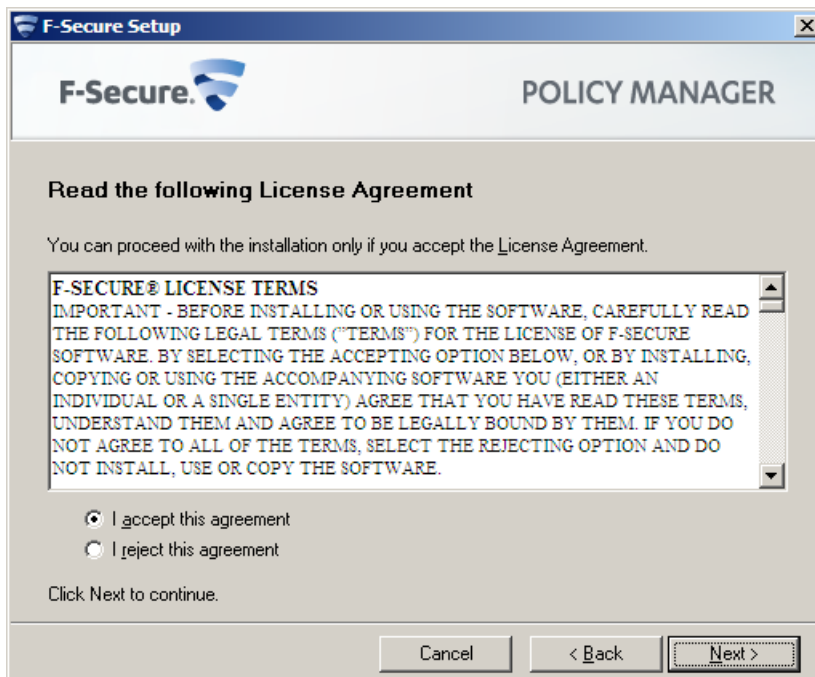
The first stage in installing Policy Manager is to download and run the installation package.

To begin installing the product:

1. Download the installation package from www.f-secure.com/webclub.
You will find the file in the **Download** section of the **Policy Manager** page.
2. Double-click the executable file to begin installation.
Setup begins.



3. Select the installation language from the drop-down menu and click **Next** to continue.
4. Read the license agreement information, then select **I accept this agreement** and click **Next** to continue.

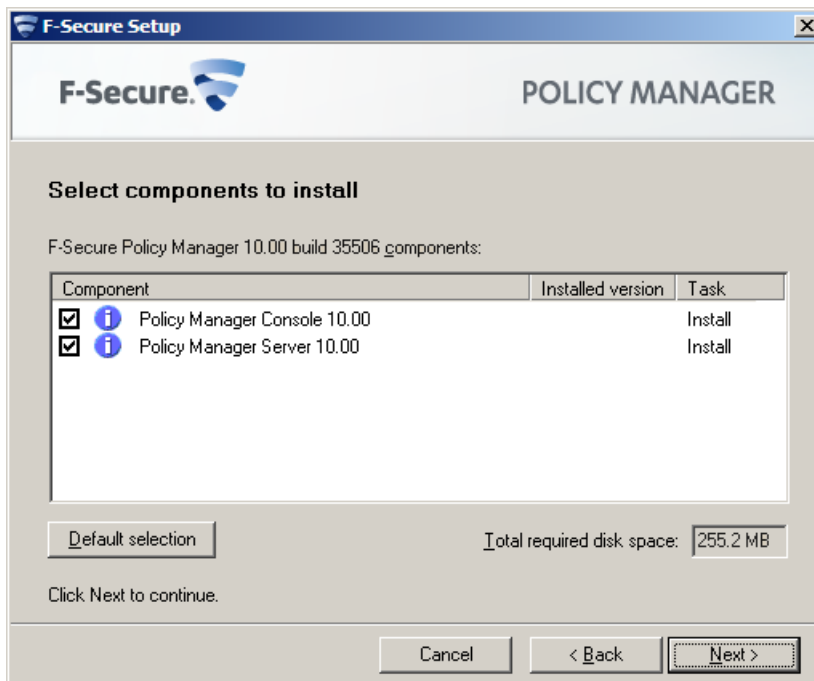


Select components to install

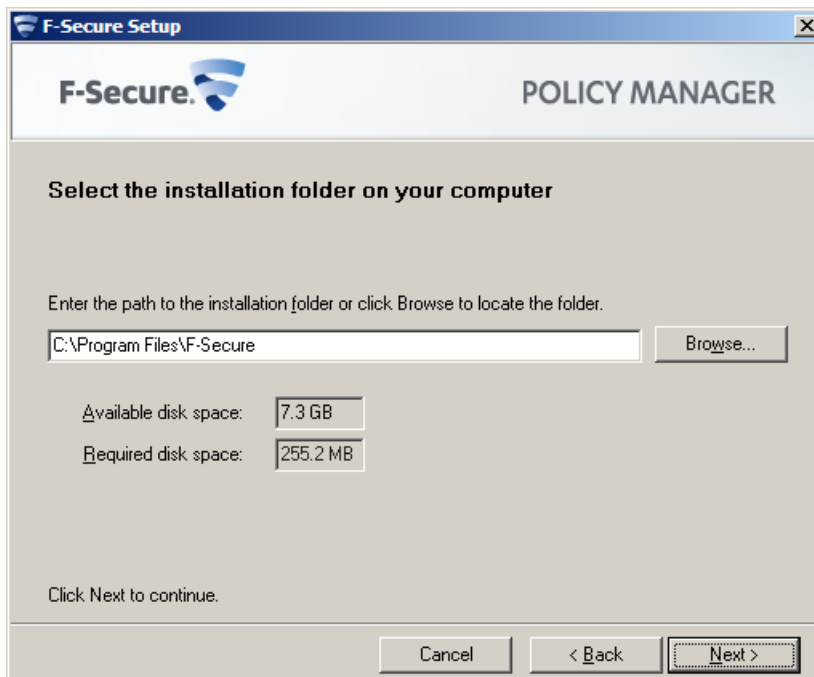
The next stage is to select the product components to install.

To continue installing the product:


1. Select the components to install and click **Next** to continue.



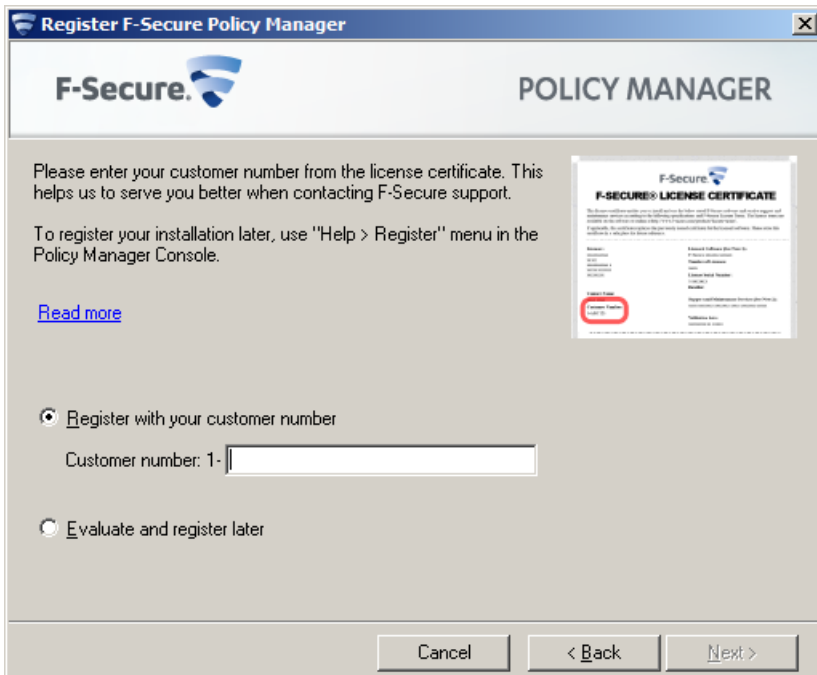
- Select both Policy Manager Server and Policy Manager Console to install both components on the same machine.
 - Select Policy Manager Server if you want to install Policy Manager Console on a separate machine.
2. Choose the destination folder and then click **Next**.



It is recommended to use the default installation directory. If you want to install the product in a different directory, you can click **Browse** and select a new directory.

 **Note:** If you have Management Agent installed on the same machine, this window will not be shown.

3. Enter your customer number and then click **Next**.



Register F-Secure Policy Manager

F-Secure. POLICY MANAGER

Please enter your customer number from the license certificate. This helps us to serve you better when contacting F-Secure support.

To register your installation later, use "Help > Register" menu in the Policy Manager Console.

[Read more](#)

Register with your customer number

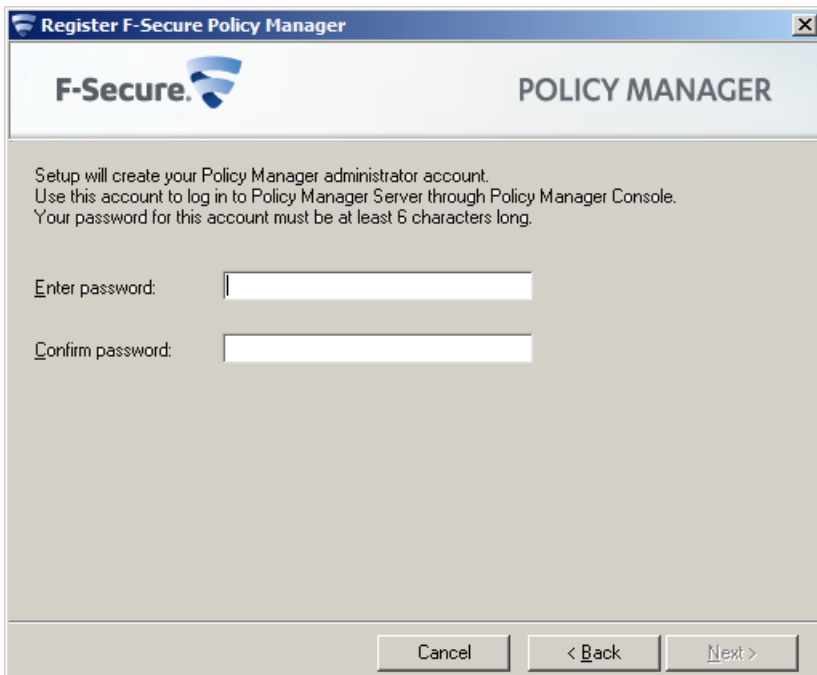
Customer number: 1-

Evaluate and register later

Cancel < Back Next >

You can find your customer number in the license certificate provided with the product.

4. Enter and confirm a password for your admin user account, then click **Next**.



Register F-Secure Policy Manager

F-Secure. POLICY MANAGER

Setup will create your Policy Manager administrator account.
Use this account to log in to Policy Manager Server through Policy Manager Console.
Your password for this account must be at least 6 characters long.

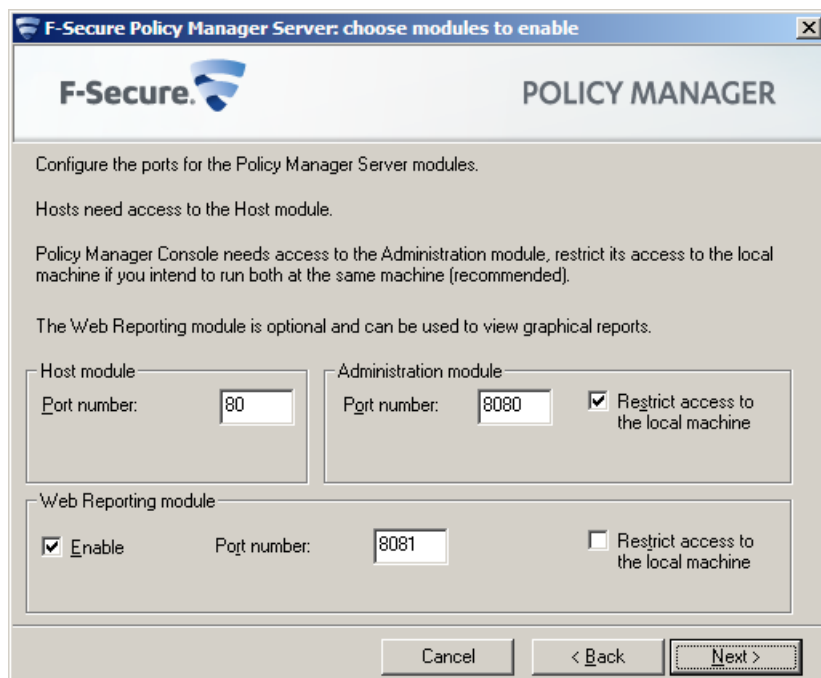
Enter password:

Confirm password:


Cancel < Back Next >

Use this password to log in to Policy Manager Console with the user name `admin`.

5. Select the Policy Manager Server modules to enable:



- The **Host** module is used for communication with the hosts. The default port is 80.
- The **Administration** module is used for communication with Policy Manager Console. The default HTTP port is 8080.

 **Note:** If you want to change the default port for communication, you will also need to include the new port number in the **Connections** URL when logging in to Policy Manager Console.

By default, access to the **Administration** module is restricted to the local machine. This is the most secure way to use the product. When using a connection over a network, please consider securing the communication with F-Secure SSH.

- The **Web Reporting** module is used for communication with Web Reporting. Select whether it should be enabled. Web Reporting uses a local socket connection to the **Administration** module to fetch server data. The default port is 8081.

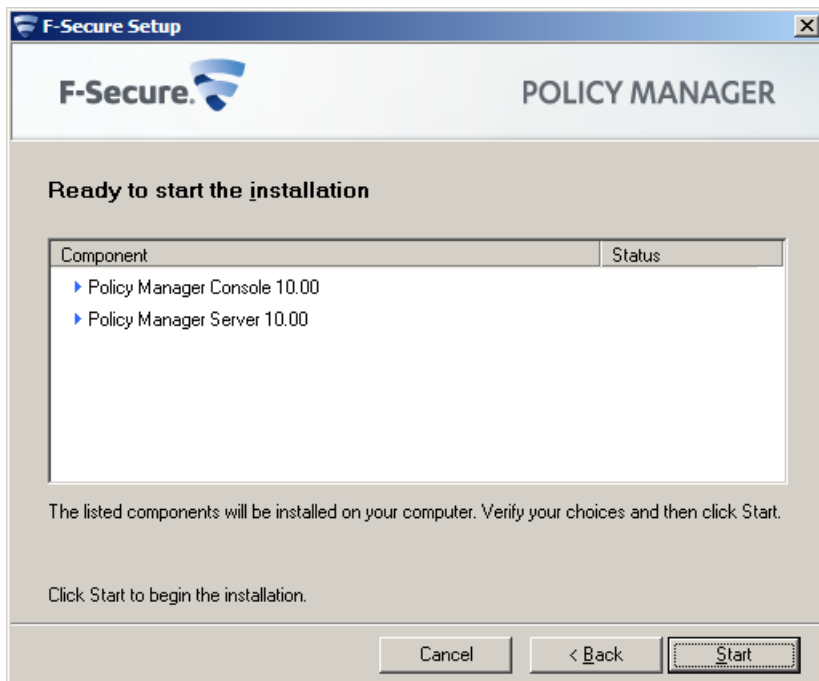
By default, access to Web Reporting is allowed also from other computers. If you want to allow access only from this computer, select **Restrict access to the local machine**.

6. Click **Next** to continue.

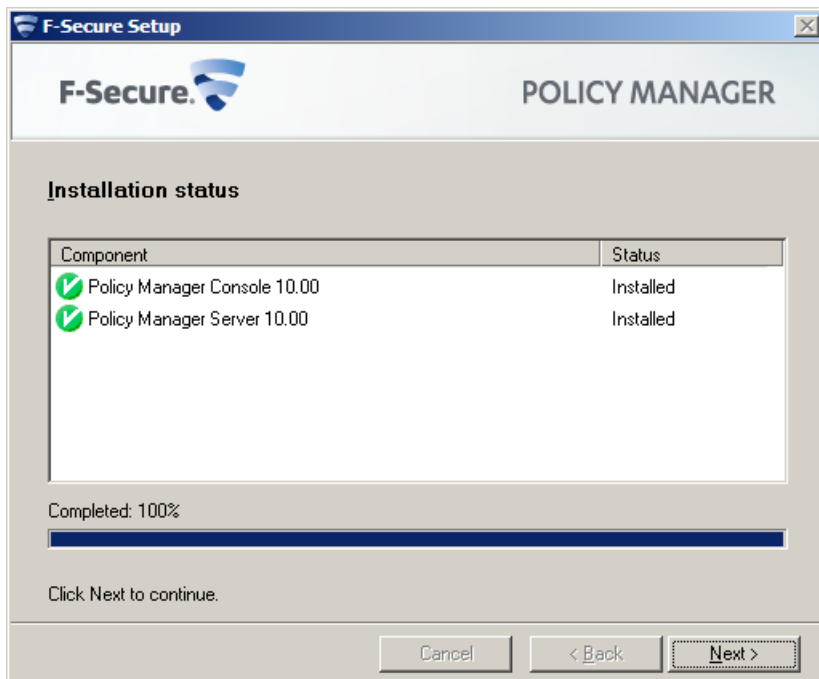
Complete installation of the product

The next stage is to complete the installation of the product.

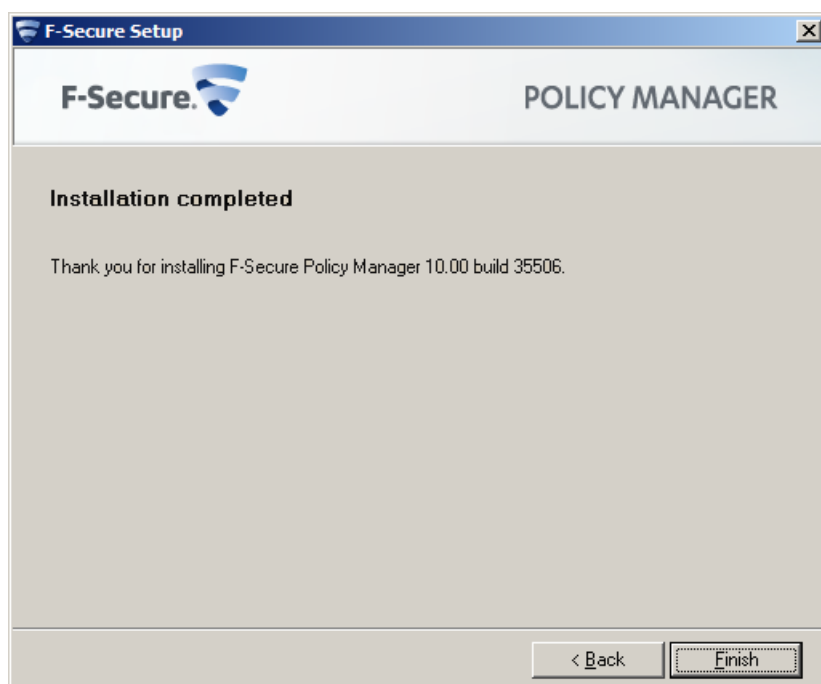
1. Review the changes that setup is about to make, then click **Start** to start installing the selected components.



When completed, the setup shows whether all components were installed successfully.



2. Click **Finish** to complete the installation.



3. Restart your computer if you are prompted to do so.
4. Start Policy Manager Console and log in with the user name `admin` and the password you entered during installation.

Remote deployment of other F-Secure products

The steps given here are general guidelines for deploying other F-Secure products with Policy Manager.

Policy Manager can install software to new hosts that are not yet centrally managed. These hosts can be browsed from Windows NT domains using the [Autodiscover Windows hosts](#) feature. The software is then push installed to the managed hosts.

Policy Manager offers other methods of installing and updating managed applications. Shortcuts to all the installation-related features are gathered under the [Installation](#) tab.

The following steps are used for both the [Advanced mode](#) and [Anti-virus mode](#) user interface:

1. In Policy Manager, select the policy domain containing the hosts to which you will install.
2. Open the [Edit](#) menu and select [Autodiscover Windows hosts](#).
 - a) From the [NT domains](#) list that opens, select one of the domains and click [Refresh](#).
 - b) Select the hosts to be imported and click [Install](#).
3. Select the installation package for the selected hosts.
4. Select the products to install.

You can choose to force reinstallation if applications with the same version number already exist.
5. Choose to accept the default policy, or specify which host or domain policy should be used as an anonymous policy.
6. Choose the user account and password used to perform the push installation.
7. Review the installation summary and then click [Start](#) to start the remote installation wizard.

Policy Manager will install the selected products on the hosts. The [Status](#) line displays when the process is complete. You can select in which domain the new hosts should be placed using the import settings.

8. Click **Finish**.
9. When the installation is finished, go to the **Status** tab to view the list of products that were installed.

